

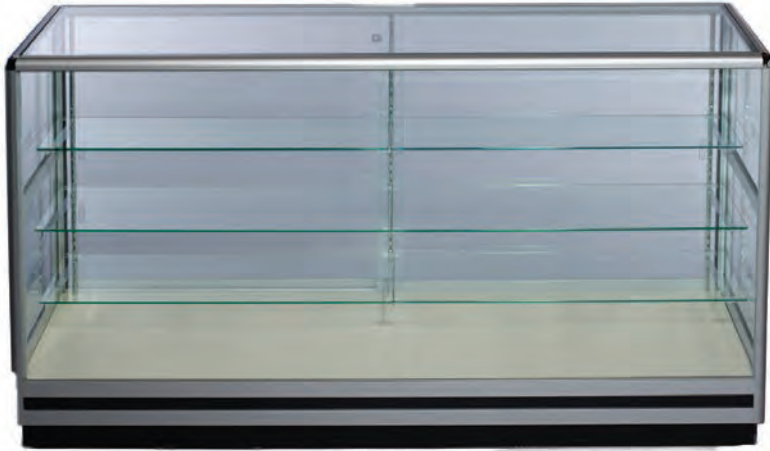


89G B79BH9F

A UbXU Um6 Um7 cbj Ybhjcb7 YbhYf  
June 1-4, 2018

# Ultra Line

## ULTRA LINE FEATURES:



FULL VISION SHOWN HERE

- LED lighting available in:
  - 3000K Yellow
  - 6000K White
- Aluminum frame
- Matte black exterior
- Glass sliding doors with lock
- Glass sides
- Rear storage area with lock available on half and quarter vision showcases only
- Available in 4', 5', and 6' lengths and corner cases
- Available in full, half, and quarter vision
- 41½" high and 20" deep
- Riser available to add 7" height for an additional \$60 per showcase

SIZE	QUANTITY			3000K OR 6000K	ADVANCED PRICE	PRICE FOR ORDERS RECEIVED AFTER 04/13/18	SHOW SITE PRICE	TOTAL
	FULL VISION	HALF VISION	QUARTER VISION					
4 FOOT					\$465.00	\$490.00	\$640.00	
5 FOOT					\$465.00	\$490.00	\$640.00	
6 FOOT					\$465.00	\$490.00	\$640.00	
34" CORNER					\$490.00	\$515.00	\$665.00	
48" CORNER					\$490.00	\$515.00	\$665.00	

Add \$60.00 per riser \$ \_\_\_\_\_

\* MANDATORY ELECTRIC FEE - Add \$25.00 per showcase \$ \_\_\_\_\_

SUBTOTAL \$ \_\_\_\_\_

8.25% SALES TAX \$ \_\_\_\_\_

AMOUNT ENCLOSED \$ \_\_\_\_\_

COMPANY NAME: \_\_\_\_\_

ADDRESS: \_\_\_\_\_ BOOTH NO(S): \_\_\_\_\_

CITY & STATE: \_\_\_\_\_ ZIP CODE: \_\_\_\_\_

AUTHORIZED BY: \_\_\_\_\_ PHONE: \_\_\_\_\_

E-MAIL ADDRESS: \_\_\_\_\_ FAX: \_\_\_\_\_

Return Copy to: **AMERICAN FIXTURE & DISPLAY CORP.**  
 15-04 130<sup>TH</sup> STREET • COLLEGE POINT, NEW YORK 11356  
 PHONE (718) 463-2176 • FAX (718) 463-4302 • E-MAIL: [orders@americanfixture.com](mailto:orders@americanfixture.com)

[www.americanfixture.com](http://www.americanfixture.com)

Please provide the following credit card information, before the deadline date of: **APRIL 13, 2018**

DISCOVER, AMEX, VISA, M/C #: \_\_\_\_\_ EXP. DATE: \_\_\_\_\_

NAME ON CARD: \_\_\_\_\_ SEC. CODE: \_\_\_\_\_

SIGNATURE: \_\_\_\_\_ DATE: \_\_\_\_\_

**Placement grid required in order to process your order. Placement grid enclosed.**

Telephone orders not accepted.

CASES ARE RENTED FOR DISPLAY PURPOSES ONLY AND WE DO NOT WARRANT THE SAFETY OR SECURITY THEREOF. WE ARE NOT LIABLE FOR CONTENTS, DAMAGE OR BREAKAGE AFTER CASES HAVE BEEN DELIVERED.

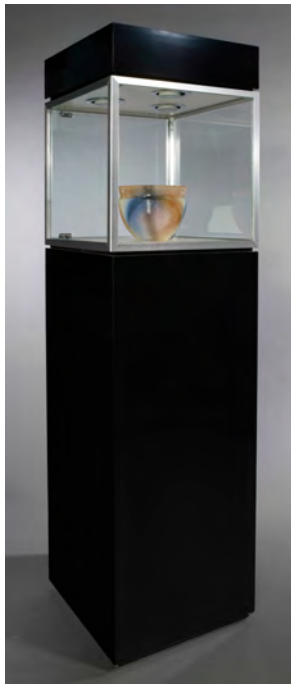
\*An electrical connection fee of \$25.00 per showcase has been negotiated by Reed Exhibitions to insure a smooth move-in for exhibitors. American Fixture & Display Corp. has agreed to assist by collecting this fee and remitting it to the appropriate parties.



89G B 79BH9F

A UbXU'Um6 Um7 cbj YbHjcb '7 YbHf' June 1-4, 2018

# Accent Cube



## ACCENT CUBE FEATURES:

- LED lighting
- Aluminum frame
- Black exterior
- 18" wide x 18" deep x 70" high
- 18" wide x 18" deep x 18" high glass display area
- Hinged frameless glass door with lock
- Storage area with lock

QUANTITY	PRICE	PRICE FOR ORDERS RECEIVED AFTER 04/13/18	SHOW SITE PRICE	TOTAL
	\$330.00	\$355.00	\$505.00	

\* MANDATORY ELECTRIC FEE - Add \$25.00 per showcase \$ \_\_\_\_\_

SUBTOTAL \$ \_\_\_\_\_

8.25% SALES TAX \$ \_\_\_\_\_

AMOUNT ENCLOSED \$ \_\_\_\_\_

COMPANY NAME: \_\_\_\_\_

ADDRESS: \_\_\_\_\_ BOOTH NO(S): \_\_\_\_\_

CITY & STATE: \_\_\_\_\_ ZIP CODE: \_\_\_\_\_

AUTHORIZED BY: \_\_\_\_\_ PHONE: \_\_\_\_\_

E-MAIL ADDRESS: \_\_\_\_\_ FAX: \_\_\_\_\_

Return Copy to: **AMERICAN FIXTURE & DISPLAY CORP.**

15-04 130<sup>TH</sup> STREET • COLLEGE POINT, NEW YORK 11356

PHONE (718) 463-2176 • FAX (718) 463-4302 • E-MAIL: [orders@americanfixture.com](mailto:orders@americanfixture.com)

**[www.americanfixture.com](http://www.americanfixture.com)**

Please provide the following credit card information, before the deadline date of: **APRIL 13, 2018**

DISCOVER, AMEX, VISA, M/C #: \_\_\_\_\_ EXP. DATE: \_\_\_\_\_

NAME ON CARD: \_\_\_\_\_ SEC. CODE: \_\_\_\_\_

SIGNATURE: \_\_\_\_\_ DATE: \_\_\_\_\_

**Placement grid required in order to process your order. Placement grid enclosed.**

Telephone orders not accepted.

CASES ARE RENTED FOR DISPLAY PURPOSES ONLY AND WE DO NOT WARRANT THE SAFETY OR SECURITY THEREOF. WE ARE NOT LIABLE FOR CONTENTS, DAMAGE OR BREAKAGE AFTER CASES HAVE BEEN DELIVERED.

\*An electrical connection fee of \$25.00 per showcase has been negotiated by Reed Exhibitions to insure a smooth move-in for exhibitors. American Fixture & Display Corp. has agreed to assist by collecting this fee and remitting it to the appropriate parties.



89G B79BH9F

A UbXU Um6 Um7 cbj Ybhjcb'7 YbhYf'
June 1-4, 2018

Tower



TOWER FEATURES:

- LED lighting
• Aluminum frame
• Black exterior
• 6" canopy
• 3 adjustable glass shelves
• Clear glass on four sides
• Hinged framed door with lock
• 20" wide x 20" deep x 80" high
• 20" wide x 20" deep x 54" high glass display area

Table with 5 columns: QUANTITY, PRICE, PRICE FOR ORDERS RECEIVED AFTER 04/13/18, SHOW SITE PRICE, TOTAL. Values include \$405.00, \$430.00, and \$580.00.

\* MANDATORY ELECTRIC FEE - Add \$25.00 per showcase \$
SUBTOTAL \$
8.25% SALES TAX \$
AMOUNT ENCLOSED \$

COMPANY NAME:
ADDRESS:
CITY & STATE:
AUTHORIZED BY:
E-MAIL ADDRESS:
BOOTH NO(S):
ZIP CODE:
PHONE:
FAX:

Return Copy to: AMERICAN FIXTURE & DISPLAY CORP.
15-04 130TH STREET • COLLEGE POINT, NEW YORK 11356
PHONE (718) 463-2176 • FAX (718) 463-4302 • E-MAIL: orders@americanfixture.com

www.americanfixture.com

Please provide the following credit card information, before the deadline date of: APRIL 13, 2018

DISCOVER, AMEX, VISA, M/C #:
NAME ON CARD:
SIGNATURE:
EXP. DATE:
SEC. CODE:
DATE:

Placement grid required in order to process your order. Placement grid enclosed.

Telephone orders not accepted.

CASES ARE RENTED FOR DISPLAY PURPOSES ONLY AND WE DO NOT WARRANT THE SAFETY OR SECURITY THEREOF. WE ARE NOT LIABLE FOR CONTENTS, DAMAGE OR BREAKAGE AFTER CASES HAVE BEEN DELIVERED.

\*An electrical connection fee of \$25.00 per showcase has been negotiated by Reed Exhibitions to insure a smooth move-in for exhibitors. American Fixture & Display Corp. has agreed to assist by collecting this fee and remitting it to the appropriate parties.



89G B79BH9F

A UbXUUm6 Um7 cbj YbHjcb7 YbHYf  
June 1-4, 2018

# Museum Pedestal



## MUSEUM PEDESTAL FEATURES:

- LED lighting
- Aluminum Frame
- Black exterior
- 8" canopy
- Glass doors with lock
- Storage area with lock
- 30" wide x 20" deep x 70" high
- 30" wide x 20" deep x 20" high glass display area

QUANTITY	PRICE	PRICE FOR ORDERS RECEIVED AFTER 04/13/18	SHOW SITE PRICE	TOTAL
	\$475.00	\$500.00	\$650.00	

\* MANDATORY ELECTRIC FEE - Add \$25.00 per showcase \$ \_\_\_\_\_  
 SUBTOTAL \$ \_\_\_\_\_  
 8.25% SALES TAX \$ \_\_\_\_\_  
 AMOUNT ENCLOSED \$ \_\_\_\_\_

COMPANY NAME: \_\_\_\_\_  
 ADDRESS: \_\_\_\_\_ BOOTH NO(S): \_\_\_\_\_  
 CITY & STATE: \_\_\_\_\_ ZIP CODE: \_\_\_\_\_  
 AUTHORIZED BY: \_\_\_\_\_ PHONE: \_\_\_\_\_  
 E-MAIL ADDRESS: \_\_\_\_\_ FAX: \_\_\_\_\_

Return Copy to: **AMERICAN FIXTURE & DISPLAY CORP.**  
 15-04 130<sup>TH</sup> STREET • COLLEGE POINT, NEW YORK 11356  
 PHONE (718) 463-2176 • FAX (718) 463-4302 • E-MAIL: [orders@americanfixture.com](mailto:orders@americanfixture.com)  
**[www.americanfixture.com](http://www.americanfixture.com)**

Please provide the following credit card information, before the deadline date of: **APRIL 13, 2018**

DISCOVER, AMEX, VISA, M/C #: \_\_\_\_\_ EXP. DATE: \_\_\_\_\_  
 NAME ON CARD: \_\_\_\_\_ SEC. CODE: \_\_\_\_\_  
 SIGNATURE: \_\_\_\_\_ DATE: \_\_\_\_\_

**Placement grid required in order to process your order. Placement grid enclosed.**

Telephone orders not accepted.

CASES ARE RENTED FOR DISPLAY PURPOSES ONLY AND WE DO NOT WARRANT THE SAFETY OR SECURITY THEREOF. WE ARE NOT LIABLE FOR CONTENTS, DAMAGE OR BREAKAGE AFTER CASES HAVE BEEN DELIVERED.

\*An electrical connection fee of \$25.00 per showcase has been negotiated by Reed Exhibitions to insure a smooth move-in for exhibitors. American Fixture & Display Corp. has agreed to assist by collecting this fee and remitting it to the appropriate parties.



89G B 79BH9F

A UbXU Um6 Um7 cbj YbHcb 7 YbHYf  
June 1-4, 2018

# Boutique Case



SOLID BACK SHOWN HERE

## BOUTIQUE CASE FEATURES:

- LED lighting
- Aluminum Frame
- Black exterior
- 5" canopy
- Solid back or glass back
- 3 rows of adjustable glass shelves
- Glass doors with lock
- Storage area with lock
- 48" wide x 13" deep x 76" high
- 48" wide x 13" deep x 44" high glass display area

QUANTITY		PRICE	PRICE FOR ORDERS RECEIVED AFTER 04/13/18	SHOW SITE PRICE	TOTAL
SOLID	GLASS				
		\$520.00	\$545.00	\$695.00	

\* MANDATORY ELECTRIC FEE - Add \$25.00 per showcase \$ \_\_\_\_\_  
 SUBTOTAL \$ \_\_\_\_\_  
 8.25% SALES TAX \$ \_\_\_\_\_  
 AMOUNT ENCLOSED \$ \_\_\_\_\_

COMPANY NAME: \_\_\_\_\_  
 ADDRESS: \_\_\_\_\_ BOOTH NO(S): \_\_\_\_\_  
 CITY & STATE: \_\_\_\_\_ ZIP CODE: \_\_\_\_\_  
 AUTHORIZED BY: \_\_\_\_\_ PHONE: \_\_\_\_\_  
 E-MAIL ADDRESS: \_\_\_\_\_ FAX: \_\_\_\_\_

Return Copy to: **AMERICAN FIXTURE & DISPLAY CORP.**  
 15-04 130<sup>TH</sup> STREET • COLLEGE POINT, NEW YORK 11356  
 PHONE (718) 463-2176 • FAX (718) 463-4302 • E-MAIL: [orders@americanfixture.com](mailto:orders@americanfixture.com)  
**[www.americanfixture.com](http://www.americanfixture.com)**

Please provide the following credit card information, before the deadline date of: **APRIL 13, 2018**

DISCOVER, AMEX, VISA, M/C #: \_\_\_\_\_ EXP. DATE: \_\_\_\_\_  
 NAME ON CARD: \_\_\_\_\_ SEC. CODE: \_\_\_\_\_  
 SIGNATURE: \_\_\_\_\_ DATE: \_\_\_\_\_

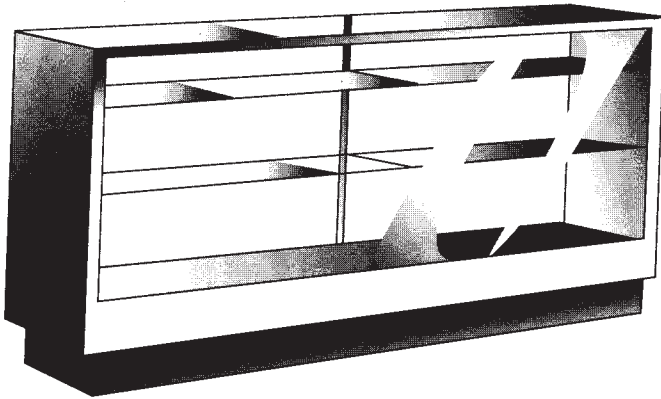
**Placement grid required in order to process your order. Placement grid enclosed.**

Telephone orders not accepted.

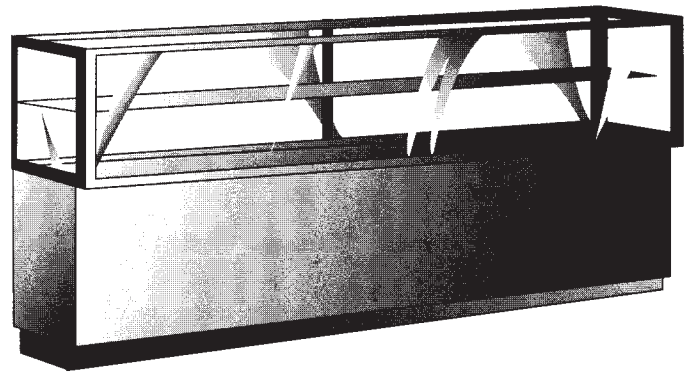
CASES ARE RENTED FOR DISPLAY PURPOSES ONLY AND WE DO NOT WARRANT THE SAFETY OR SECURITY THEREOF. WE ARE NOT LIABLE FOR CONTENTS, DAMAGE OR BREAKAGE AFTER CASES HAVE BEEN DELIVERED.

\*An electrical connection fee of \$25.00 per showcase has been negotiated by Reed Exhibitions to insure a smooth move-in for exhibitors. American Fixture & Display Corp. has agreed to assist by collecting this fee and remitting it to the appropriate parties.

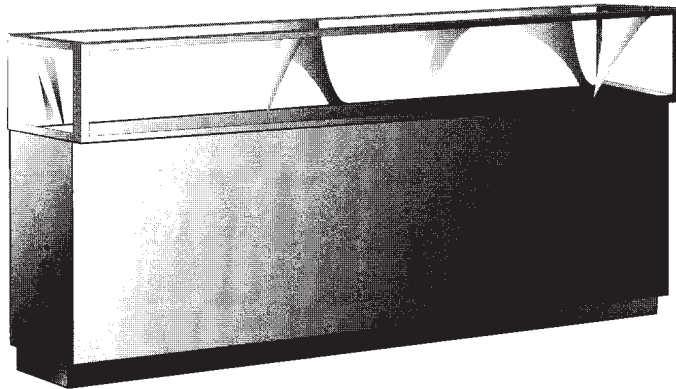
## Available Styles



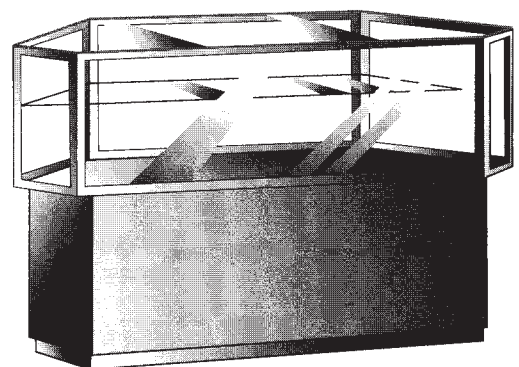
FULL VISION SHOWCASE



HALF VISION SHOWCASE



QUARTER VISION SHOWCASE



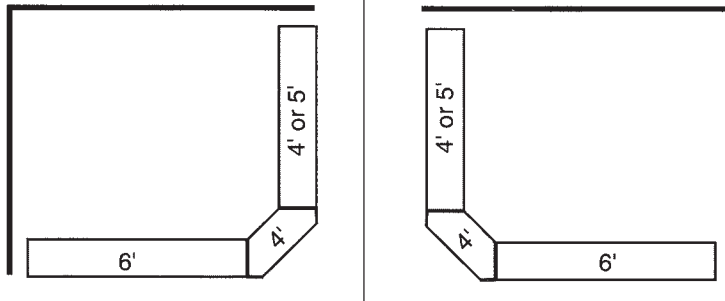
CORNER SHOWCASE

**American Fixture & Display Corp.**

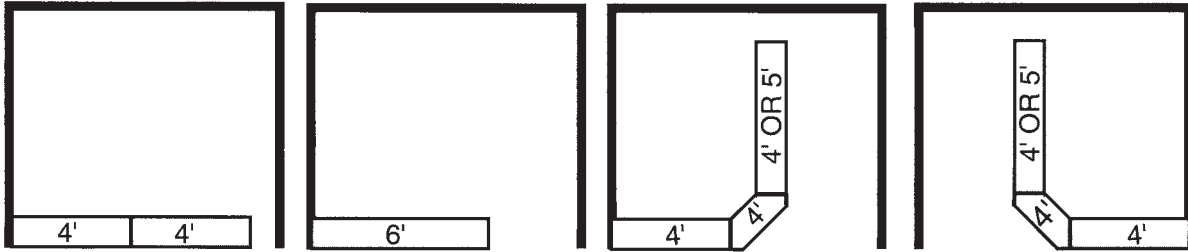
15-04 130th Street, College Point, New York 11356 • TEL: [718] 463-2176 FAX: [718] 463-4302

# Sample Layouts

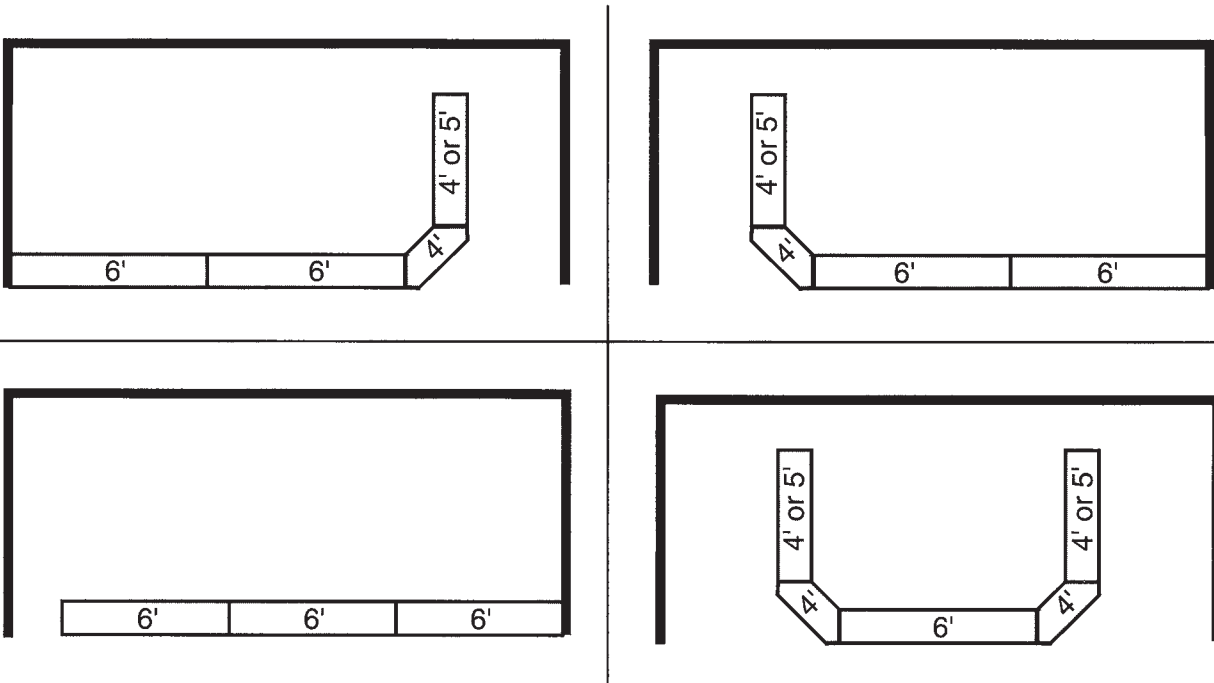
## 10 FOOT X 10 FOOT CORNER BOOTHS



## 10 FOOT X 10 FOOT SINGLE BOOTHS



## 10 FOOT X 20 FOOT DOUBLE BOOTHS



# American Fixture & Display Corp.

# **ELECTRICAL INFORMATION**

## **LED Lighting**

<b><u>Ultra Case</u></b>	42 Watts
<b><u>Accent Cube</u></b>	24 Watts
<b><u>Tower</u></b>	28 Watts
<b><u>Museum Pedestals</u></b>	36 Watts
<b><u>Boutique Case (Top Only)</u></b>	84 Watts





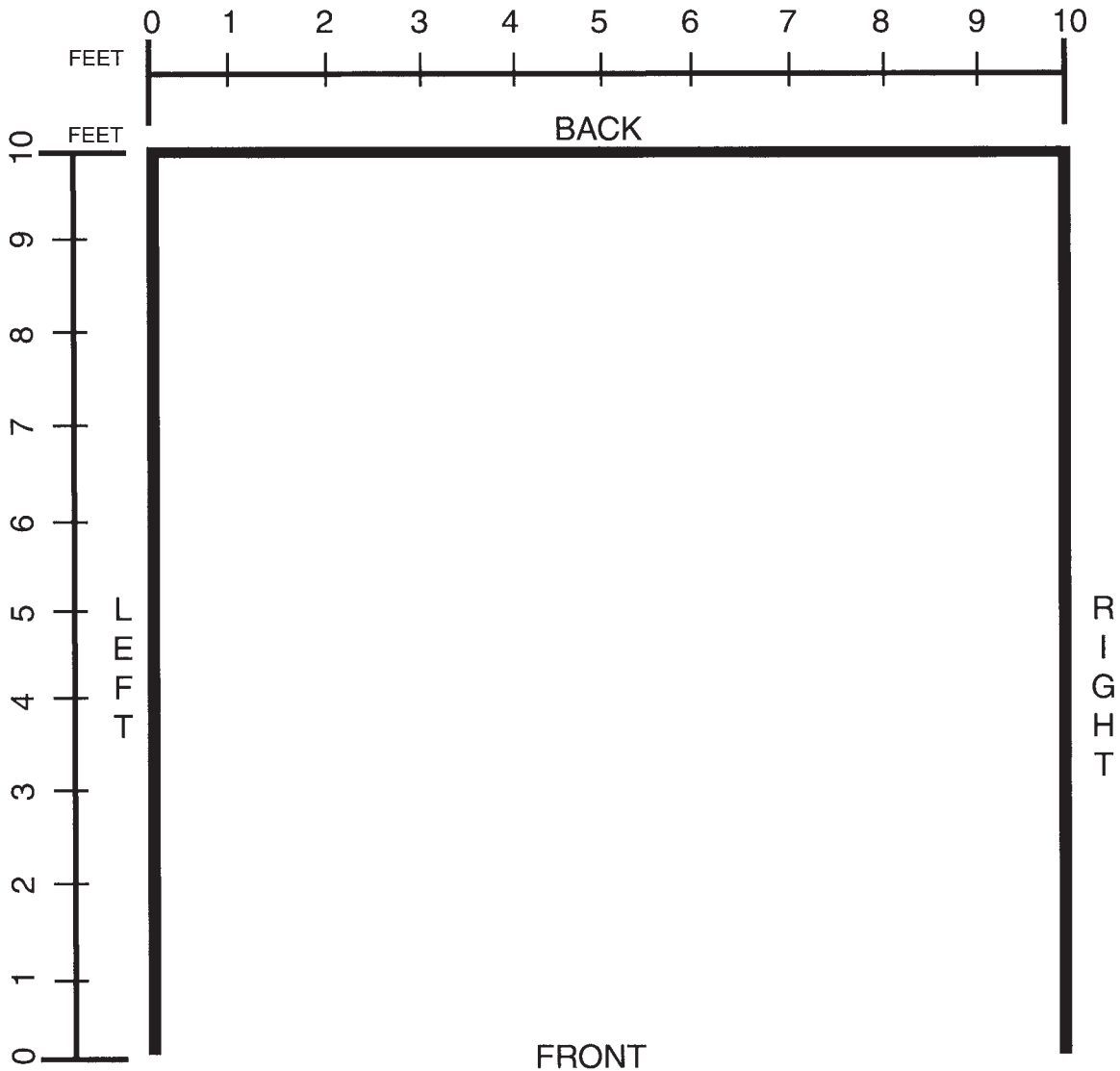
89G B'79BH9F

MUST BE SUBMITTED FOR ORDER TO BE PROCESSED

A UbXUUm6 Um7 cbj YbHcb' 7YbHf June 1-4, 2018

# Showcase Placement Grid

PLEASE INDICATE BELOW THE MANNER IN WHICH YOU WANT THE SHOWCASES PLACED IN YOUR BOOTH(S) AND RETURN THIS FORM TO US WITH YOUR ORDER. IF YOU HAVE MULTIPLE BOOTHS, PLEASE CHANGE THE FOOT MARKINGS AS NECESSARY.



EXHIBITOR NAME: \_\_\_\_\_ BOOTH NO.: \_\_\_\_\_ BOOTH SIZE: \_\_\_\_\_

**American Fixture & Display Corp.**

15-04 130th Street, College Point, New York 11356 • TEL: [718] 463-2176 FAX: [718] 463-4302